



Passionforcombustion
since 1983

Staged fuel gas only burners

NATURAL AND FORCED DRAUGHT

The I.C.E. “SF” burner design started in the late 90’s as an answer to market request of low NOx burners, suitable to meet pollutant emissions regulations.

Coupling practice and feedbacks from site, the target has been a safe and reliable equipment to help site operators avoiding potentially dangerous situations.

Further, burners must have the capacity to follow process variation without losing in performance.

Natural and forced draft versions are available to fit a variety of process applications, where key parameters are:

- **High reliability**
- **Good flame stability**
- **High turn-down ratio**

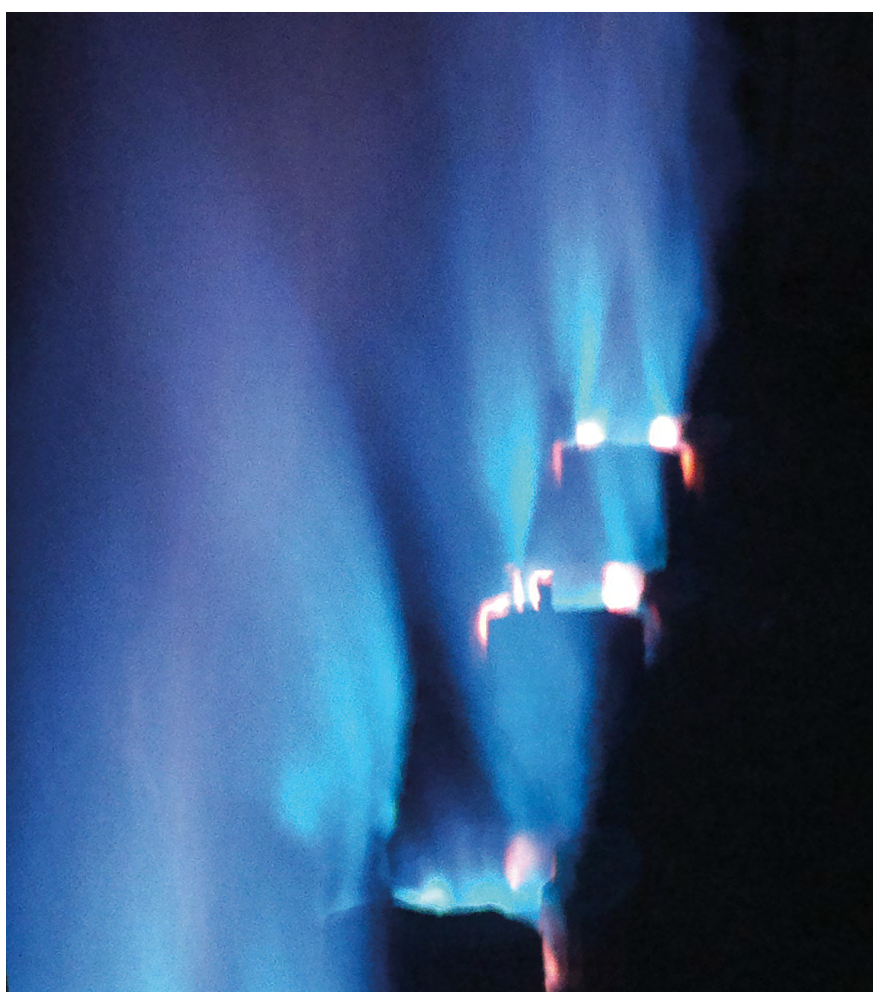
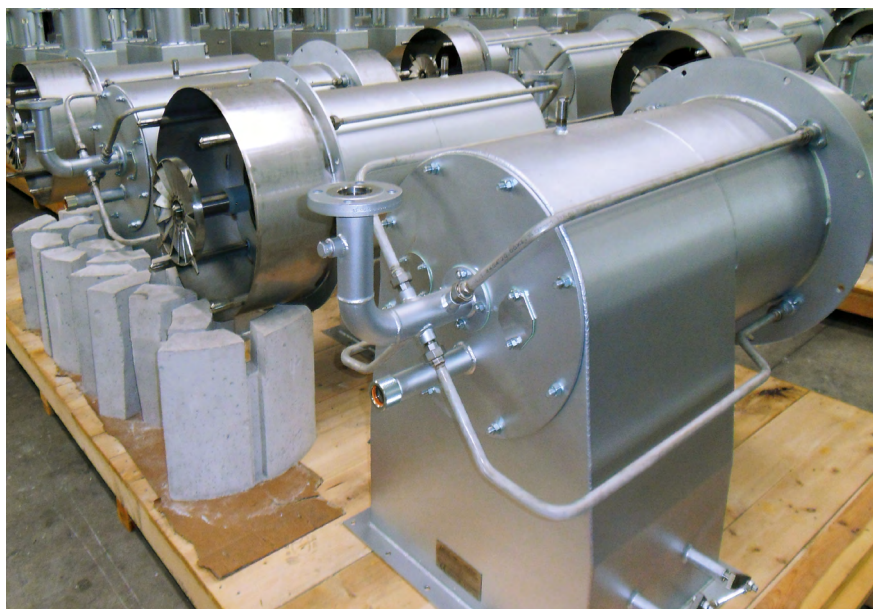
This burner line is designed focusing on:

- **Reliability as first priority**
- **Safety in operation**
- **Flexibility and easy to use design**

Engineered for a wide range of gaseous fuels thus producing stable flame operation with a broad range of excess air, it also ensures a wide turn-down range (depending on fuel pressure supply).

Our staged fuel technology (a special internal design developed to meet the most stringent environmental regulations) allows to reach very low NOx levels, for many operating cases lower than 100 mg/Nm³.

Thanks to our special jacketed refractory design and company’s experience in developing tailor made solutions, the “SF” burners are the right approach to any kind of gas firing process application.



I.C.E. 
INTERNATIONAL COMBUSTION EQUIPMENT S.r.l.

I.C.E. S.r.l.

Headquarters

Via Cesare Battisti, 112
20862 Arcore (MB) - ITALY
Ph +39 039 61 80 445
Fax +39 039 61 68 84

info@it-ice.com - www.it-ice.com

Workshop / Test Area

Via degli Artigiani, 25/27
26010 Cremona (CR) - ITALY
Ph +39 0373 27 36 54
Fax +39 0373 29 12 59

Technical features

MECHANICAL & CONSTRUCTION CHARACTERISTICS

Pilots in carbon steel / LTCS for low temperature / stainless steel for special application.

Steelworks in carbon steel / Corten / LTCS / stainless steel / Hastelloy.

Refractories std with 60% Al_2O_3 or customized upon client request up to 90% or more alumina.

PROCESS DATA / APPLICATIONS

Available heat releases:

- From 0.2 to 6.0 MW as standard.
Design custom versions upon request

Operating pressures (gas):

- From 0.3 barg (3:1 TD) up to 2.5 barg (12:1 TD and further)

Low NOx performances:

- < 60 mg/Nm³ NOx with NG and 750°C bridgewall temperature and ambient air

Low sound pressure level:

- < 82 dbA with all standard refinery fuels

High reliability and low maintenance, long service life assured, suitable flame profile and stability.

HEATER TYPES

All process heaters types as:

- VC heaters
- Cabin heaters (horizontal or vertical firing)
- Multi-cell heaters (horizontal or vertical firing)

Member of CISQ Federation



CERTIFIED MANAGEMENT SYSTEM

ISO 9001

RINA, certificate n° 20585/09/S